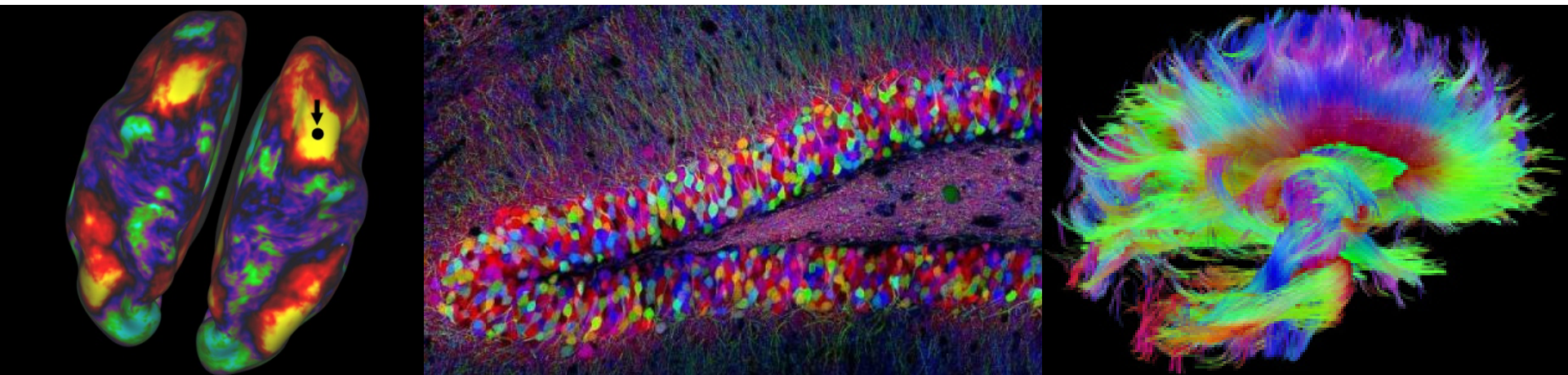


# Implementing the **BRAIN** Initiative at NIH

**Kathy Hudson, PhD**  
**NIH Deputy Director for**  
**Science, Outreach, and Policy**

# Overview

- FY14
  - Funding
  - Process
- Beyond FY14

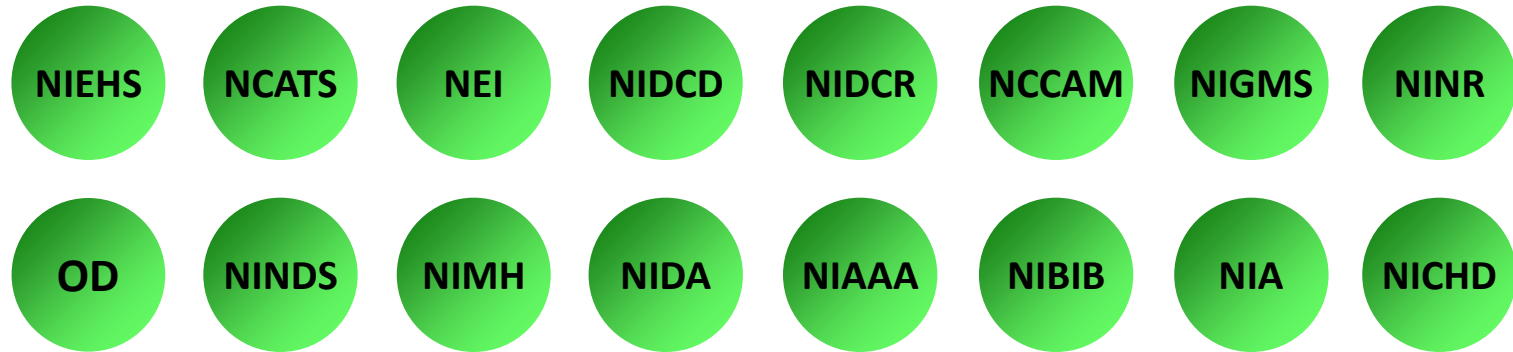


**FY 14 – NIH IMPLEMENTATION**

# NIH Investment

Source	Amount
Office of the Director (OD)	\$10M
Blueprint for Neuroscience Research (BP)	\$10M
Mental Health (NIMH)	\$7.5M
Neurological Disorders and Stroke (NINDS)	\$7.5M
Drug Abuse (NIDA)	\$4M
Biomedical Imaging and Bioengineering (NIBIB)	\$1M
<b>Total</b>	<b>\$40M</b>

# NIH Blueprint Institutes and Centers



- Focus on cross-cutting scientific issues
- Issue Grand Challenges (e.g., Human Connectome)
- Develop resources for research community (GENSAT, Toolbox for Assessment of Neurological and Behavioral Function, Neuroscience Information Framework)
- Coordinate research/planning and share best practices/resources
- Develop new training programs

# Implementation Steps

Sept.,  
2013

## Working Group

- Identify high priority research areas (ACD review)

## NIH

- Solicit public comment
- Communicate with stakeholders
- Analyze existing portfolio
- Develop FY14 RFAs

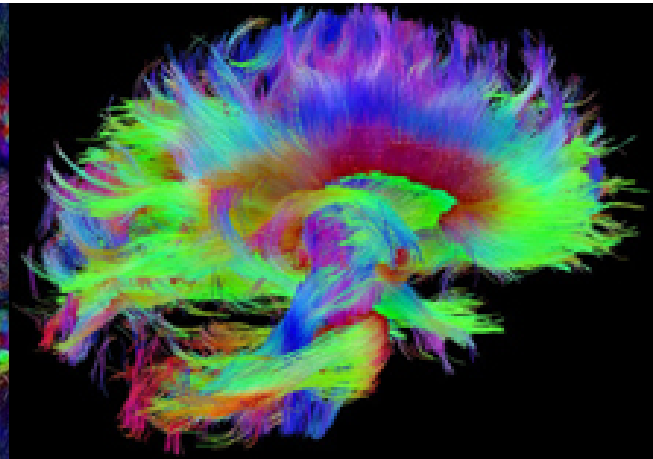
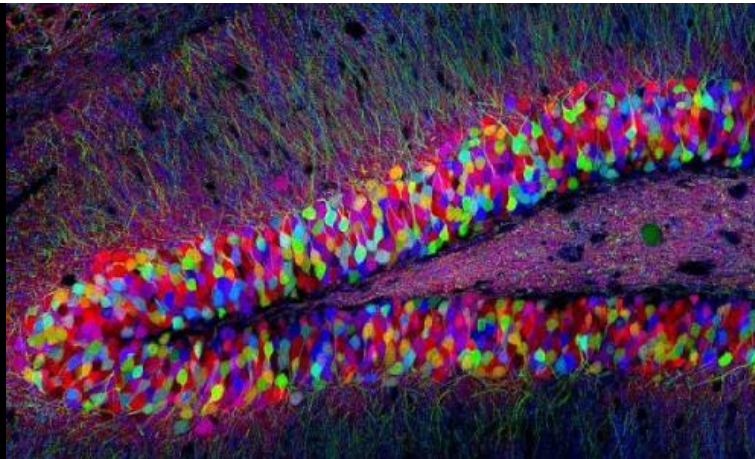
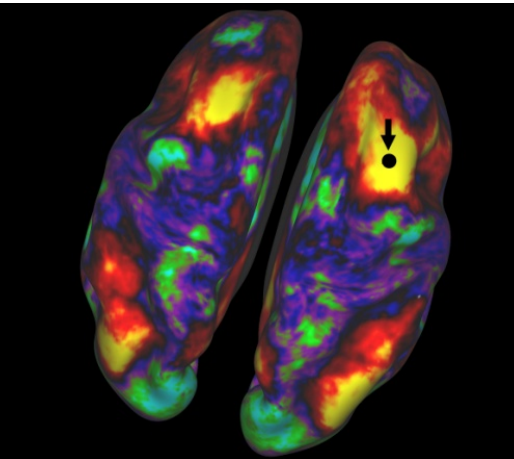
- Develop long-term plan for NIH's goals for and investment in the BRAIN Initiative
- Solicit input from scientific communities, stakeholders, and the general public

- Solicit public comment
- Communicate with stakeholders
- Conduct peer review (SEPs)
- Develop FY14 funding plan
- Hold Council review
- Issue awards
- Submit FY15 budget request

June,  
2014

- Issue final Report with milestones, timetables, and cost estimates (ACD review)

- Solicit public comment
- Communicate with stakeholders
- Develop FY15 RFAs
- Adopt multi-year NIH BRAIN plan



**BEYOND FY 14...**

# Governance: NIH BRAIN

## Desired Attributes

- **Broad NIH participation and buy in**
- **Solid connection to all the BRAIN Institutes and Centers**
- **Best possible scientific input**
- **Consistent, on going guidance**
- **Respected advisors looking at the whole BRAIN and not parts**



# Governance:

## NIH BRAIN sub-council

- **Membership**
  - 1 rep. from each BRAIN IC Council
  - Ad hoc members as necessary
- **Charge**
  - Provide on-going input and guidance for implementation plan (based off ACD recs)
  - Input to Council secondary review
  - Discuss potential new initiatives
- **Advantages**
  - Integrates BRAIN research across NIH
  - Ensures a coordinated and focused effort

# Opportunities for Expansion

- Founding partners identified by the White House Office of Science & Technology Policy
  - Federal Agencies: NIH, DARPA, NSF
  - Private Organizations: HHMI, Allen Institute for Brain Science, Kavli Foundation, and Salk Institute
- Incomplete list and many other organizations are interested in participating

# Opportunities for Expansion

- President Obama envisioned the BRAIN Initiative to be a national effort, requiring “all hands on deck”
- White House is interested in:
  - Talking to companies, philanthropies, foundations, non-profits, universities, and state governments that are interested in making financial and in-kind commitments
  - Soliciting input from the community about what types of partnerships would have the biggest impact

